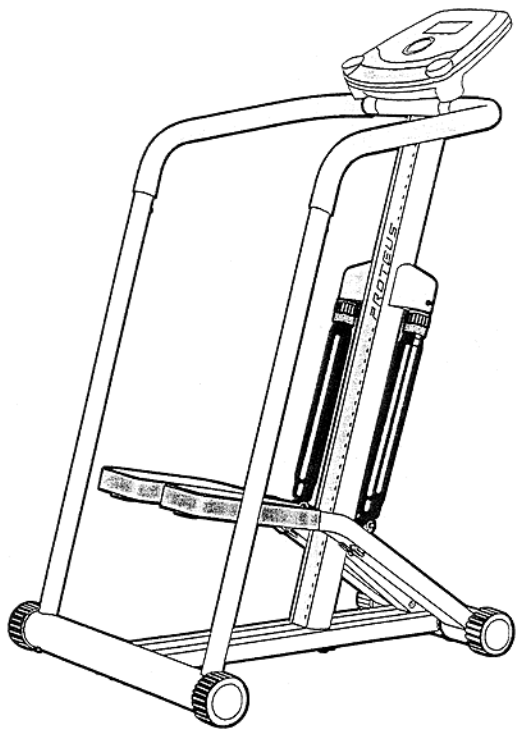


PROTEUS[®]
DESIGN INNOVATION

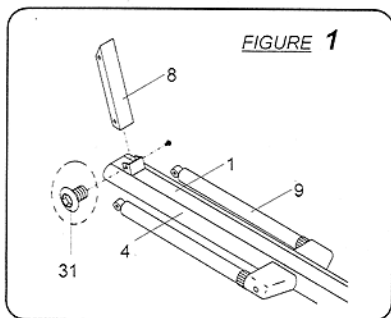
INDEPENDENT STEPPER



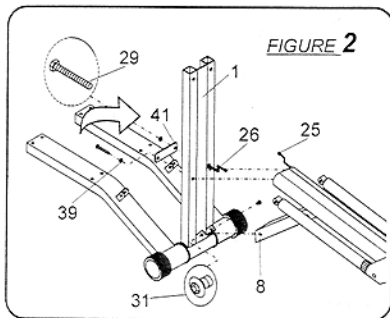
ISS-500
Owner's manual

ASSEMBLY INSTRUCTION

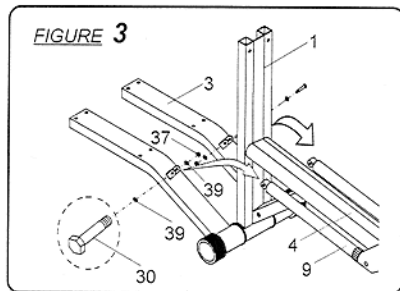
- STEP 1. FIGURE 1**
CONNECT BRACE TUBE TO UPRIGHT TUBE
 SLIDE BRACE TUBE (8) ONTO THE BRACKET OF UPRIGHT TUBE (4) AND LOCK BRACE TUBE (8) ONTO BRACKET WITH 2 x SOCKET HEAD BOLTS (31). DO NOT FULLY TIGHTEN UNTIL STEP 2 (d).



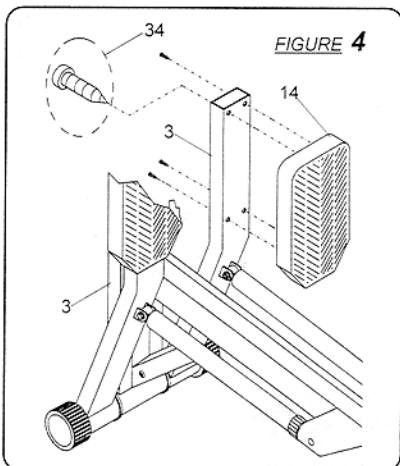
- STEP 2. FIGURE 2**
CONNECT UPRIGHT TUBE AND BRACE TUBE TO BASE TUBE
- ROTATE BASE TUBE (1) OF BASE TUBE ASSEMBLY TO VERTICAL POSITION AND POSITION UPRIGHT TUBE ASSEMBLY AS SHOWN.
 - PLUG EXTENSION WIRE (25) TO REED SWITCH WIRE (26).
 - FIT UPRIGHT TUBE ASSEMBLY TO BASE TUBE (1), MAKING SURE YOU DON'T DAMAGE THE EXTENSION WIRE, AND FIX INTO POSITION WITH FLAT BACKING PLATE (41), 2 x FLAT WASHERS (39), HEX HEAD BOLTS (29), AND 2 x SOCKET HEAD BOLTS (31).
 - TIGHTEN ALL BOLTS.



- STEP 3. FIGURE 3**
CONNECT CYLINDERS TO FOOT PAD ARMS
- REMOVE RETAINING WIRE FROM END OF CYLINDERS (9).
 - ROTATE FOOT PEDAL ARMS (3) UP AS SHOWN.
 - FIT CYLINDERS (9) TO BRACKET ON FOOT PEDAL ARMS (3) WITH 2 x HEX HEAD BOLTS (30), 4 x FLAT WASHERS (39) AND 2 x NYLON NUTS (37). DO NOT OVER TIGHTEN BOLTS.



- STEP 4. FIGURE 4**
CONNECT FOOT PEDALS TO FOOT PEDAL ARMS
 FIT FOOT PEDALS (14) TO EACH OF FOOT PEDAL ARMS (3) USING 4 x PAN HEAD SCREWS (34) FOR EACH SIDE.



STEP 5. FIGURE 5
CONNECT STABILIZER TO BASE TUBE AND HANDLEBAR/SUPPORT TO STABILIZER

- PUSH REAR STABILIZER (2) WITH LARGE HOLES FACING FOOT PEDALS (14) ONTO END OF BASE TUBE (1) AND SECURE WITH 2 x SOCKET HEAD BOLTS (28).
- INSERT TUBE CONNECTOR END OF SUPPORT TUBES (7) (SEE DETAIL), INTO LARGE HOLES OF REAR STABILIZER (2) AS SHOWN.
- HOLD HANDLEBAR SUPPORT TUBES (7) IN PLACE WITH 2 x HE x HEAD BOLTS(40) AND 2 x FLAT WASHERS (39) AS SHOWN. DO NOT FULLY TIGHTEN BOLTS UNTIL STEP 6(b).

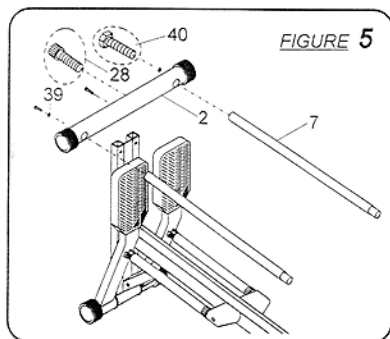


FIGURE 5

STEP 6. FIGURE 6
CONNECT AND ATTACH HANDLEBARS

- INSERT LOWER END OF LEFT HANDLEBAR (5L) AND RIGHT HANDLEBAR (6R) INTO SUPPORT TUBES (7) AS SHOWN AND FIX WITH 2 x TRUSS HEAD SCREWS (33).
- SLIGHTLY ADJUSTING ANGLE OF FITTING HANDLEBAR (L&R) TO UPRIGHT TUBE (4) AND FIX WITH 2 x TRUSS HEAD SCREWS (33), TIGHTEN ALL BOLTS & SCREWS.

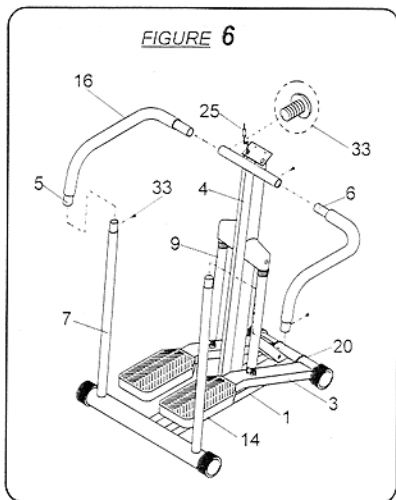


FIGURE 6

STEP 7. FIGURE 7
INSTALL CONSOLE AND MONITOR

- TO OPEN BATTERY DOOR OF MONITOR (24) THEN INSERT 2 AA BATTERIES (INCLUDED) AND CLOSE BATTERY DOOR.
- CONNECT MONITOR (24) WITH EXTENSION WIRE (25).
- PLACE MONITOR ON PLATE OF UPRIGHT TUBE (4) BY 4 x TRUSS HEAD SCREWS (35).

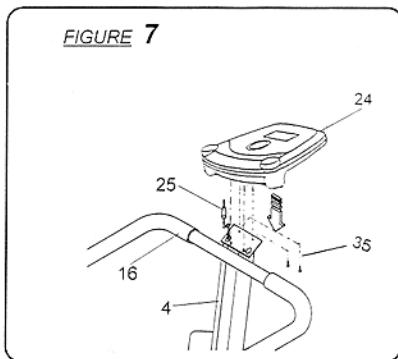
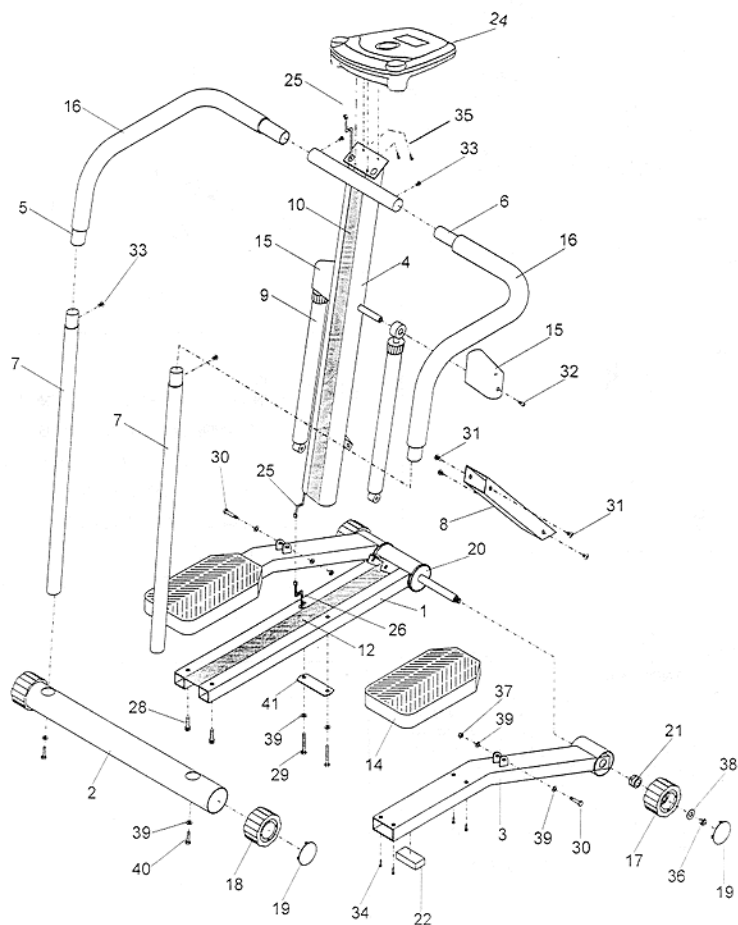


FIGURE 7

EXPLODED VIEW

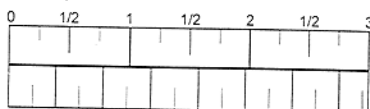


ISS-500-99-02

PARTS LIST

KEY	Q'TY	DESCRIPTION
1.	1	BASE TUBE
2.	1	REAR STABILIZER
3.	2	FOOTPEDAL ARM(L&R)
4.	1	UPRIGHT TUBE
5.	1	HANDLEBAR(LH)
6.	1	HANDLEBAR(RH)
7.	2	SUPPORT TUBE
8.	1	BRACE TUBE
9.	2	CYLINDER
10.	1	PANEL (A) x 1120mm
11.	1	PANEL (B) x 995mm
12.	1	PANEL (C) x 725mm
13.	1	PANEL (D) x 160mm
14.	2	FOOT PEDAL
15.	2	PLASTIC HOUSING
16.	2	FOAM GRIP
17.	2	WHEEL
18.	2	FOOT CAP
19.	4	COVER
20.	2	LARGE NYLON BUSING
21.	2	NYLON BUSING
22.	2	BUMPER
24.	1	MONITOR
25.	1	EXTENSION WIRE
26.	1	REED SWITCH WIRE
27.	1	MAGNET
28.	2	3/8" SOCKET HEAD BOLT x 31mm
29.	2	M8 HEX HEAD BOLT x 60mm
30.	2	M8 HEX HEAD BOLT x 40mm
31.	4	M8 SOCKET HEAD BOLT x 12mm
32.	2	M6 SOCKET HEAD SCREW x 15mm
33.	4	M6 TRUSS HEAD SCREW x 10mm
34.	8	5/8" PAN HEAD SCREW x 20mm
35.	4	M5 TRUSS HEAD SCREW x 10mm
36.	2	1/2" NYLON NUT
37.	2	M8 NYLON NUT
38.	2	1/2" FLAT WASHER
39.	8	M8 FLAT WASHER
40.	2	5/16" HEX HEAD BOLT x 1-1/4"
41.	1	FLAT BACKING PLATE

INCHES



0
mm



M5

M6

M8

5/16"

7/16"

HARDWARE ILLUSTRATIONS

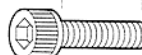


FLAT BACKING
PLATE



FLAT
WASHER

LENGTH



3/8" SOCKET
HEAD BOLT



M8 NYLON
NUT



M6 TRUSS
HEAD SCREW



HEX HEAD
BOLT



M5 TRUSS
HEAD SCREW



M8 SOCKET
HEAD BOLT



PAN HEAD
SCREW

TOOLS

