

MI080/100/150

ASSEMBLY INSTRUCTION

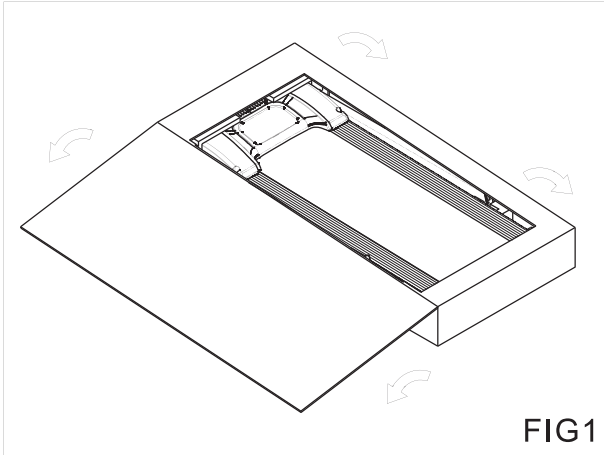


FIG1

1. Tear off and pave flat of the packing paperboard.

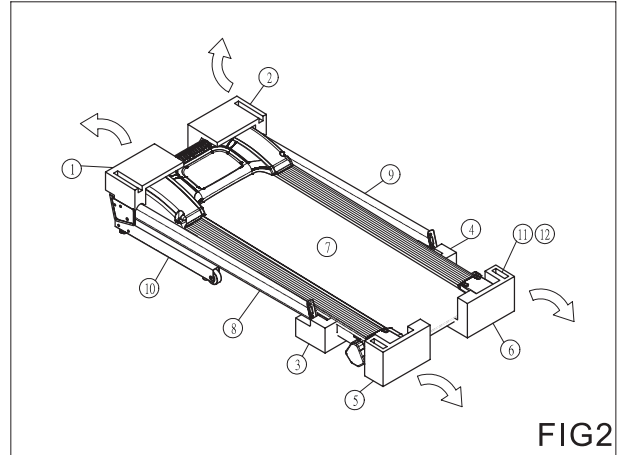


FIG2

1. Take away of the packing plastic sheet and the Styrofoam (#1,2,5,6). Keep the Styrofoam (#3,4).
2. Move off manual bag which you can find tools (#11,12) inside of the bag and the screws (#24 x 4 pcs) are taped outside of bag.

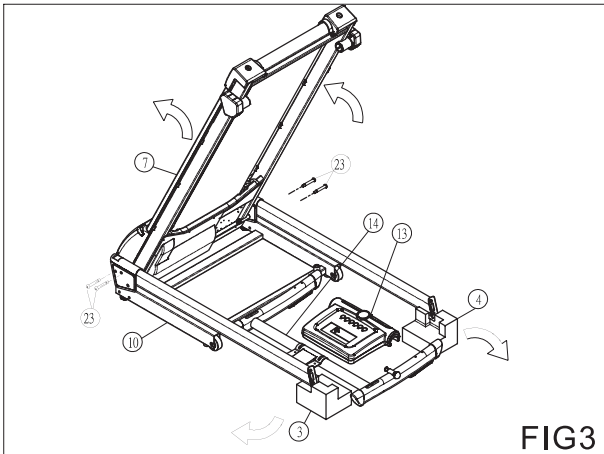


FIG3

1. Carefully lift (as showing on the above picture) the frame(#7) and hold it on also carefully.
2. Move off the console(#13) and the completed handlebar set (#14) first, then move off the Styrofoam (#3,4).
3. Lay down carefully the frame.
4. Move off 4 pieces base frame screws (#23).

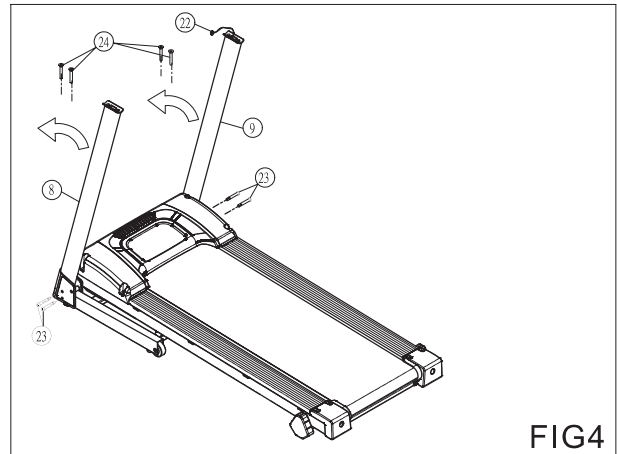


FIG4

1. Swivel up the support handle-Left (#8) to upright position, lock back the 2 pieces base frame screws (#23) by using tool #11.
2. Repeat the assembly on the support handle-Right (#9)

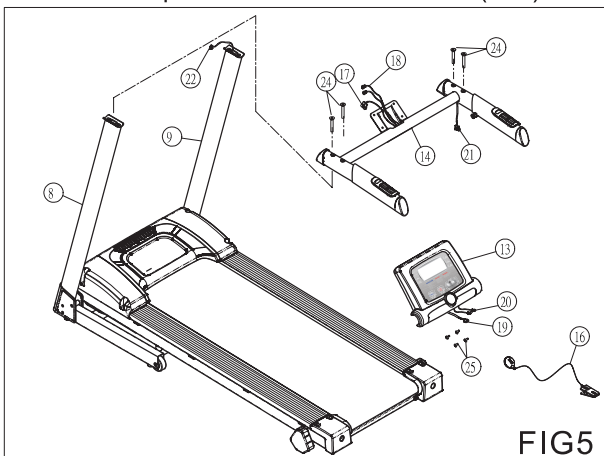


FIG5

1. Lay the completed handlebar set (#14) on the support handles, face to face connect PCB cable-middle(#21) and PCB cable-Lower (#22), and insert the cable into tube.
2. Lock tight the completed handlebar set on support handles with the 4 pieces of screws (#24) as shown on above picture.

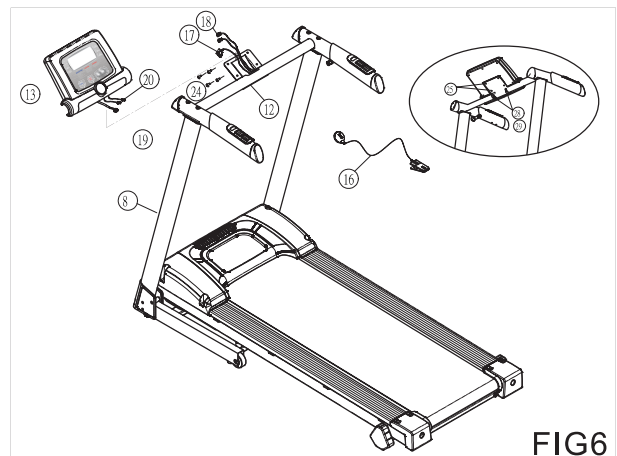


FIG6

1. Move off the 4 pieces screws (#25) on the back of console.
2. Connect PCB cable-lower (#17) and PCB cable-upper (#19).
3. Connect hand pulse cable-lower (#18) and hand pulse cable-upper (#20).
4. Fix console on console bracket and lock tight with screws (#25).

Noted: you can adjust the position of console by screw and washer(#28,#29)