

MI150

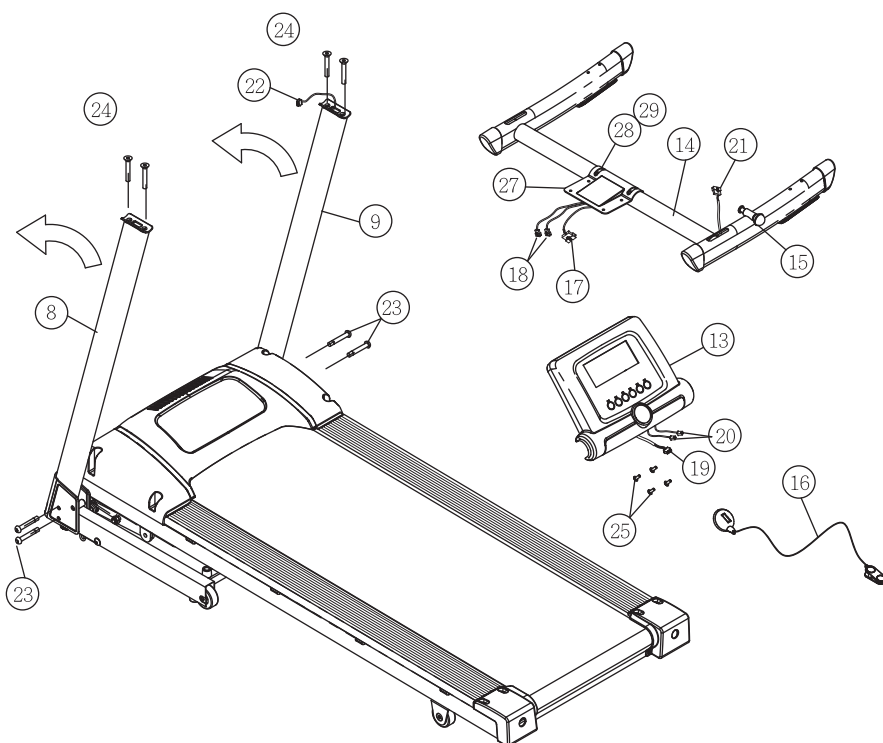
ASSEMBLY INSTRUCTION

Warning

After unpacking the fitness equipment, examine it carefully for possible damage. If there is any damage or there are missing parts, please contact your retailer or an authorized repair facility for assistance.

This treadmill is shipped with all parts and tools necessary for assembly. Please read this entire manual thoroughly before assembling. We recommend assembling the treadmill on the shipping carton. Ensure the floor is solid, level and clean.





Parts






- #8 Support handle-Left
- #9 Support handle-Right
- #10 Base frame
- #13 Console
- #14 Completed handlebar set
- #15 Locking knob for folding
- #16 Safety key
- #17/#21 PCB cable-Middle
- #18 Hand pulse cable-Lower
- #19 PCB cable-Upper
- #20 Hand pulse cable-Lower
- #22 PCB cable-Lower
- #23 Base frame screws x 4 pcs
- #24 Handlebar screws x 4 pcs
- #25 Console screws x 4 pcs
- #27 Console bracket
- #28/#29 Screw and washer for console position adjustment

Hardware tool

Screw attached on machine

M8*45L(4PCS)	M4*10L(4PCS)	M8*15L(2PCS)	M8(2PCS)
(23) 	(25) 	(28) 	(29) 

Screw packed by poly bag

M5(1PCS)	M6(1PCS)	M8*65L(4PCS)
(11) 	(12) 	(24) 

Make sure of the screws already on the machine and in the tooling bag.