

PROTEUS[®]
DESIGN INNOVATION

MAGNETIC

PULSE CYCLE



PEC-5000
Owner's manual

STEP 1. ATTACH FRONT STABILIZER (02) AND REAR STABILIZER (03) TO MAIN FRAME (01), FIX WITH CARRIAGE BOLTS (26), WASHERS (31) AND DOME NUTS (35).

STEP 2.

IMPORTANT: READ ALL STEPS BEFORE ATTACHING PEDALS.

a. ATTACH PEDALS (17/18) TO PEDAL CRANKS, (PEDALS MARKED "L" AND "R" INDICATES LEFT AND RIGHT SIDE OF BIKE. MAKE SURE NOT TO MIX IT UP).

b. LEFT PEDAL HAS LEFTHAND THREAD AND MUST BE TUPNED COUNTERCLOCKWISE (CCW) TO ATTACH, RIGHT PEDAL HAS RIGHTHAND THREAD, MUST BE TURNED CLOCKWISE (CW) TO ATTACH.

STEP 3. ATTACH SADDLE (13) TO SADDLE PLATE OF SEAT POST (04). FASTEN IT WITH SPRING WASHERS (32) AND NYLON NUTS (34).

STEP 4. SLIDE SEAT POST (04) TO MAIN FRAME (01), ADJUST SADDLE TO DESIRED HEIGHT THEN TIGHTEN THE SEAT POST WITH POP PIN (25).

STEP 5. INSERT TENSION CABLE (10) INSIDE OF HANDLEBAR POST (05), PULL THE TENSION CABLE OUT OF MIDDLE HOLE OF HANDLEBAR POST.

CONNECT WIRE A (11) AND WIRE B (12), THEN ATTACH HANDLEBAR POST TO MAIN FRAME (01), FIX WITH WASHERS (30) AND BOLTS (27).

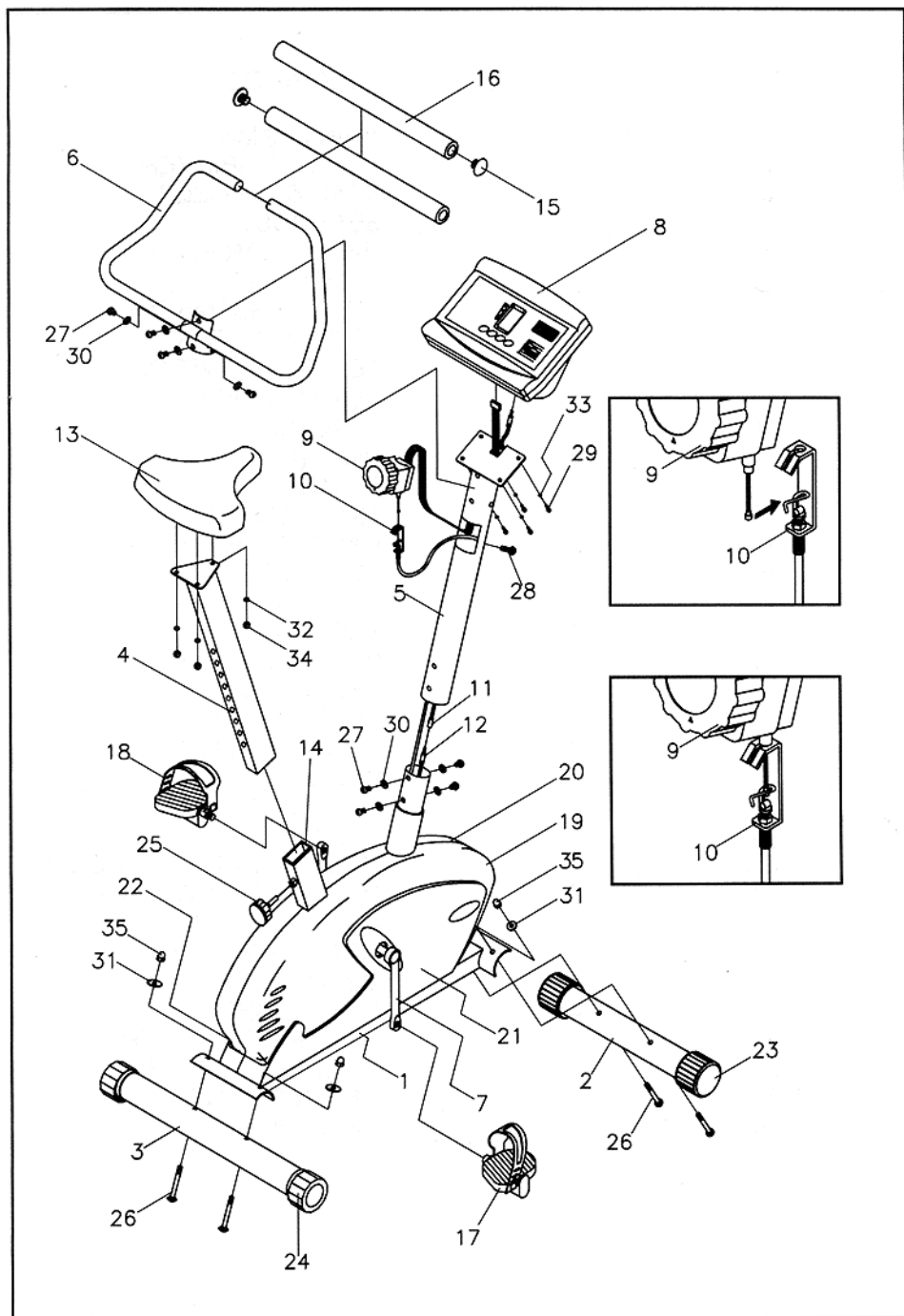
ASSEMBLE TENSION CONTROL (09) AND TENSION CABLE (10), (REFER TO DIAGRAM), PULL THE UPPER CABLE OF TENSION CONTROL (09) FROM MIDDLE HOLE TO TOP HOLE OF THE HANDLEBAR POST (05).

INSERT THE TENSION CONTROL (09) ONTO HANDLEBAR POST (05). TIGHTEN WITH SCREW (28).

STEP 6. ASSEMBLE HANDLEBAR (06) ONTO HANDLEBAR POST (05), FIX WITH WASHER (30) AND BOLTS (27).

STEP 7. CONNECT BOTH UPPER CABLE OF TENSION CONTROL (09) AND WIRE (11) WITH MONITOR (08), THEN ATTACH MONITOR ONTO THE PLATE OF HANDLEBAR (05). TIGHTEN WITH SCREWS (29) AND SPRING WASHERS (33).

NOW YOUR PEC-5000 MAGNETIC CYCLE HAS BEEN WELL ASSEMBLED.



PARTS LIST

KEY	Q'TY	DESCRIPTION
1.	1	MAIN FRAME
2.	1	FRONT STABILIZER
3.	1	REAR STABILIZER
4.	1	SEAT POST
5.	1	HANDLEBAR POST
6.	1	HANDLEBAR
7.	1	CRANK ASSEMBLY
8.	1	CYCLEMONITOR
9.	1	TENSION CONTROL
10.	1	TENSION CABLE
11.	1	WIRE (A)
12.	1	WIRE (B)
13.	1	SADDLE
14.	1	30 * 60 SLEEVE
15.	2	HANDLEBAR END CAP
16.	2	FOAM GRIP
17.	1	PEDAL (R)
18.	1	PEDAL (L)
19.	1	CHAIN COVER (R-1)
20.	1	CHAIN COVER (L-1)
21.	1	CHAIN COVER (R-2)
22.	1	CHAIN COVER (L-2)
23.	2	WHEEL
24.	2	FOOT CAP
25.	1	POP PIN
26.	4	M8 CARRIAGE BOLT x 65mm
27.	8	M8 SOCKET BOLT x 15mm
28.	1	M5 SCREW x 20mm
29.	4	M5 SCREW x 10mm
30.	8	M8 WASHER
31.	4	M8 U WASHER
32.	3	M8 SPRING WASHER
33.	4	M5 SPRING WASHER
34.	3	M8 NYLON NUT
35.	4	M8 DOME NUT