

**PROTEUS®**  
FITNESS INNOVATION

# HOME MAGNETIC PROGRAMMABLE CYCLE



**PEC - 4950**  
Owner's manual

**IMPORTANT: PLEASE READ THROUGH INSTRUCTIONS CAREFULLY BEFORE STARTING THE ASSEMBLY. DO NOT SIT ON THE RECUMBENT BIKE UNTIL ASSEMBLY DONE COMPLETELY. NO PLUG IN THE POWER BEFORE MACHINE IS FULLY ASSEMBLED.**

**STEP 1. ATTACH REAR STABILIZER ( 5 ) TO THE END OF BASE TUBE ( 2 ), FASTEN WITH BOLTS ( 3 ) WASHERS ( 4 ). FIT BASE TUBE ( 2 ) TO THE FRAME ( 1 ), FASTEN WITH BOLTS ( 3 ), & WASHERS ( 4 )**

**STEP 2. FIT FRONT STABILIZER ( 6 ) TO THE FRAME ( 1 ) WITH CARRIAGE BOLTS ( 7 ) & WASHERS ( 4 ) & NUTS ( 8 ), NOTE TO PREVENT HEAD OF CARRIAGE BOLTS ( 7 ) FROM DAMAGING FLOOR, DIMPLED SQUARE HOLES ON STABILIZER ( 6 ) MUST BE FACING DOWN.**

**STEP 3. FIT SEAT PAD ( 20 ) AND BACKREST PAD ( 21 ) TO SEAT TUBE ( 9 ), FASTEN WITH SCREWS ( 19 ).**

USE SOAP WATER AS LUBRICANT TO SLIDE FOAM GRIP ( 16 ) TO HANDLE BAR ( 18 ), FIT END CAPS ( 17 ) ON BOTH ENDS OF HANDLE BAR. ATTACH HANDLE BAR ( 18 ) TO SEAT TUBE ( 9 ), FASTEN WITH WASHER ( 4 ) & BOLTS ( 3 ).

**STEP 4. SLIDE SEAT TUBE ( 9 ) TO SLIDE TUBE ( 12 ), THEN ATTACH SLIDE TUBE SET TO FRAME WITH BOLTS ( 3 ) AND WASHERS ( 4 ).**

**NOTE: SEAT POSITION ADJUSTMENT**

TURN ADJUST BAR ( 10 ) CLOCKWISE TO LOOSE THE SEAT STOPPER ( 11 ) FOR SEAT ADJUSTMENT, THEN TURN ADJUST BAR ( 10 ) COUNTERCLOCKWISE TO FIX THE POSITION.

**IMPORTANT : READ ALL OF STEPS BEFORE ATTACHING PEDALS.**

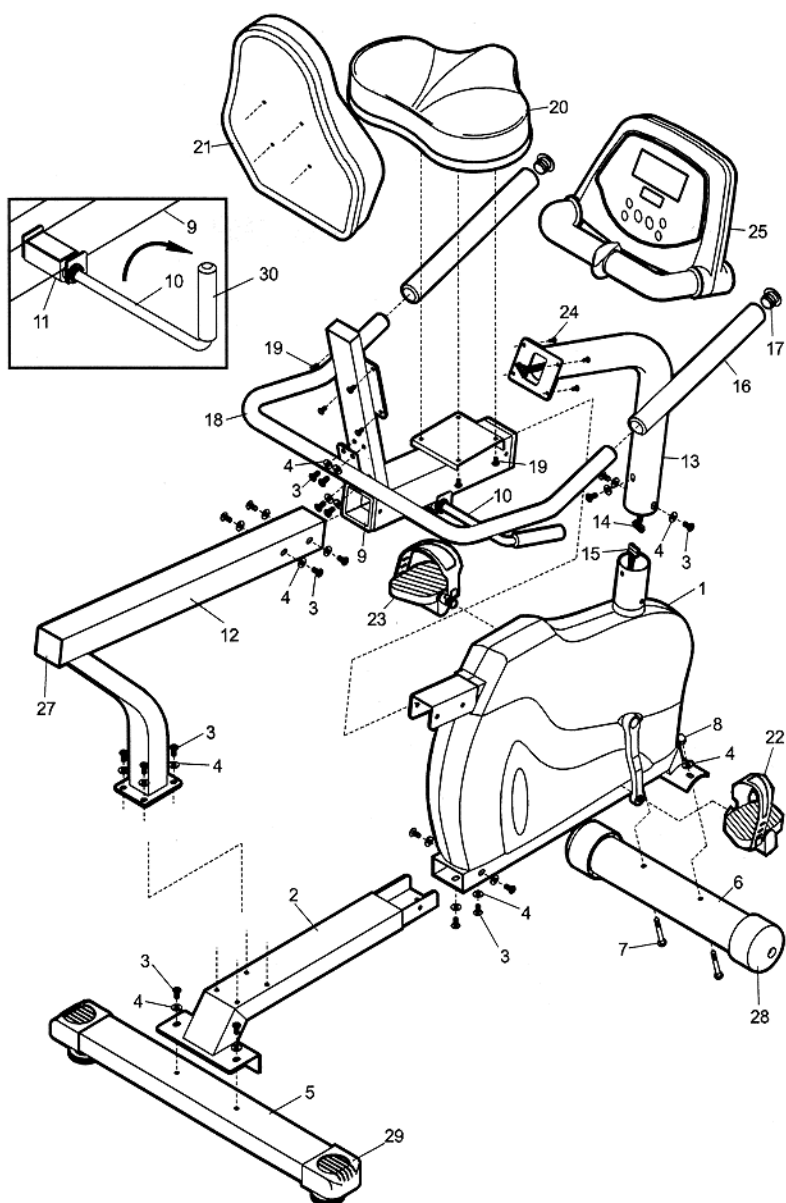
**STEP 5. ASSEMBLE PEDALS ( 22/23 ) TO THE PROPER PEDAL CRANK CORRECTLY. NOTE THE PEDALS MARKED "L" OR "R" ON THE END OF ITS SHAFT, INDICATES PEDALS MUST BE MOUNTED ON THE " LEFT " OR " RIGHT " SIDE PEDAL CRANK.**

**STEP 6. CONNECT MONITOR CABLE A ( 14, FROM END OF #13 MONITOR POST ) AND MONITOR CABLE B ( 15, FROM MAIN FRAME), THEN FIT MONITOR POST ( 13 ) TO MAIN FRAME WITH BOLTS ( 3 ) AND WASHERS ( 4 ),**

CONNECT MONITOR CABLE A ( 14, TOP OF MONITOR POST ) TO THE MONITOR ( 25 ), THEN ATTACH MONITOR ( 25 ) TO THE MONITOR PLATE ( TOP OF MONITOR POST ) WITH SCREWS ( 24 ).

NOW THE ASSEMBLY OF THE RECUMBENT CYCLE IS DONE, PLEASE NOTE WITH THE FOLLOWING INFORMATION BEFORE STARTING, THE MACHINE IS REQUESTED TO USE AC ADAPTER, WHICH SHOULD BE WITH OUTPUT 9V / 1000 MA, PLEASE ALSO REFER TO MONITOR INSTRUCTION FOR THE PROPER SPECIFICATION INFORMATION.

# EXPLODED VIEW



PEC49502000526

**PARTS LIST**

| KEY. | Q'TY | DESCRIPTION           |
|------|------|-----------------------|
| 1.   | 1    | MAIN FRAME            |
| 2.   | 1    | BASE TUBE             |
| 3.   | 21   | M8 SOCKET BOLT X 20mm |
| 4.   | 23   | M8 WASHER             |
| 5.   | 1    | REAR STABILIZER       |
| 6.   | 1    | FRONT STABILIZER      |
| 7.   | 2    | M8 BOLT X 90mm        |
| 8.   | 2    | DOME NUT              |
| 9.   | 1    | SEAT TUBE             |
| 10.  | 1    | ADJUST BAR            |
| 11.  | 1    | STOPPER               |
| 12.  | 1    | SLIDE TUBE            |
| 13.  | 1    | MONITOR POST          |
| 14.  | 1    | MONITOR CABLE ( A )   |
| 15.  | 1    | MONITOR CABLE ( B )   |
| 16.  | 2    | FOAM GRIP             |
| 17.  | 2    | HANDLEBAR END CAP     |
| 18.  | 1    | HANDLEBAR             |
| 19.  | 8    | M6 SCREW              |
| 20.  | 1    | SEAT PAD              |
| 21.  | 1    | BACKREST PAD          |
| 22.  | 1    | PEDAL (R)             |
| 23.  | 1    | PEDAL (L)             |
| 24.  | 1    | M5 SCREW              |
| 25.  | 1    | CYCLEMONITOR          |
| 27.  | 1    | 60 X 60 PLUG          |
| 28.  | 2    | WHEEL                 |
| 29.  | 2    | FOOT CAP              |
| 30.  | 1    | FOAM GRIP             |
| 31.  | 1    | CRANK ( R )           |
| 32.  | 1    | CRANK ( L )           |