

PROTEUS[®]
FITNESS INNOVATION

HOME

MAGNETIC CYCLE



PEC-3320
Owner's manual

PEC-3320 MAGNETIC CYCLE ASSEMBLY INSTRUCTION

STEP 1: ATTACH BOTH STABILIZERS (02 + 2a) TO MAIN FRAME (01). FIX WITH BOLTS (27) AND WASHERS (31).

STEP 2:

IMPORTANT : READ ALL STEPS BEFORE ATTACHING PEDALS.

- a. ASSEMBLE PEDAL STRAPS TO PEDALS. (STRAP MARKED "L" TO THE LEFT PEDAL, STRAP MARKED "R" TO THE RIGHT PEDAL).
- b. ATTACH PEDALS (17 & 18) TO PEDAL CRANKS, (PEDALS MARKED "L" AND "R" INDICATES LEFT AND RIGHT SIDE OF BIKE. MAKE SURE NOT TO MIX IT UP).
- c. LEFT PEDAL HAS LEFTHAND THREAD AND MUST BE TURNED COUNTERCLOCKWISE (CCW) TO ATTACH, RIGHT PEDAL HAS RIGHTHAND THREAD, MUST BE TURNED CLOCKWISE (CW) TO ATTACH.

STEP 3: ATTACH SADDLE (12) TO SADDLE PLATE OF SEAT POST (03). FASTEN IT WITH SPRING WASHERS (33) AND NYLON NUTS (34).

STEP 4: SLIDE SEAT POST INTO THE SEAT POST BOOT (13) THEN ATTACH SEAT POST (03) TO MAIN FRAME, ADJUST SADDLE TO DESIRED HEIGHT AND TIGHTEN WITH KNOB (26).

STEP 5: INSERT TENSION CABLE (09) INSIDE OF HANDLEBAR POST (04), PULL THE (04) TENSION CABLE OUT OF MIDDLE HOLE OF HANDLEBAR POST.

CONNECT WIRE (A) (10) AND WIRE (B) (11), THEN ATTACH HANDLEBAR POST TO MAIN FRAME (01), FIX WITH WASHERS (31) AND BOLTS (28).

ASSEMBLE TENSION CONTROL (08) AND TENSION CABLE (09), (REFER TO DIAGRAM), PULL THE UPPER CABLE OF TENSION CONTROL (08) FROM MIDDLE HOLE TO TOP HOLE OF THE HANDLEBAR POST (04)

INSERT THE TENSION CONTROL (08) ONTO HANDLEBAR POST (04), TIGHTEN WITH SCREW (29).

STEP 6: ASSEMBLE HANDLEBAR (05) ONTO HANDLEBAR POST (04), FIX WITH WASHER (32) AND T-KNOB (25), THEN ASSEMBLE FOAM GRIPS (16) AND CAPS (15) ONTO HANDLEBAR.

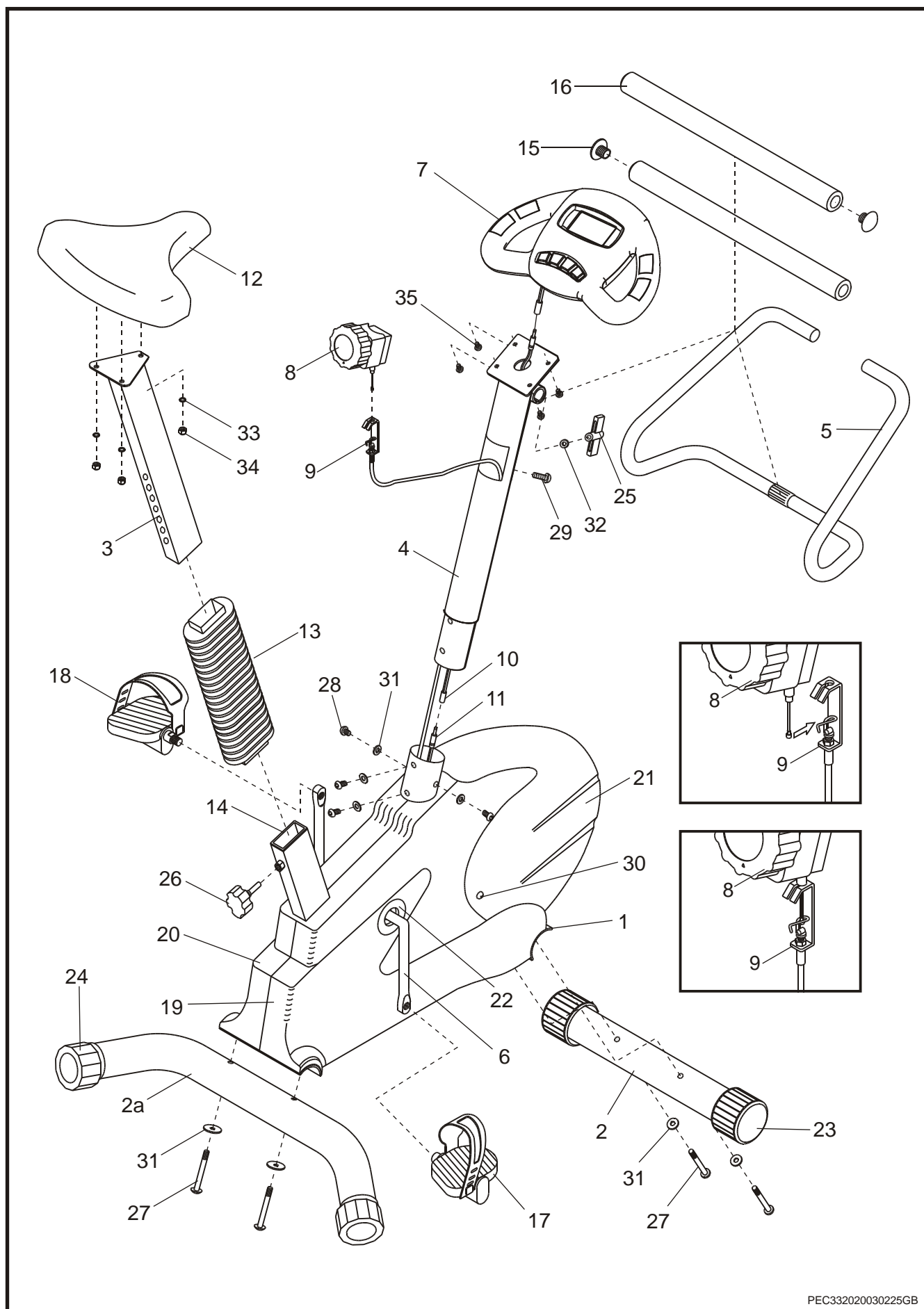
STEP 7: CONNECT WIRE (A) (10) ONTO MONITOR (07), THEN ATTACH MONITOR ON THE PLATE OF HANDLEBAR POST WITH SCREW (35).

NOW YOUR PEC-3320 HAS BEEN WELL ASSEMBLED.

" THE BATTERIES MUST BE REMOVED FROM THE APPLIANCE BEFORE IT IS SCRAPPED AND THAT THEY ARE DISPOSED OF SAFELY ".

NOTE : WHILE ASSEMBLE FOAM GRIP (16) ONTO HANDLEBAR (05), USE SOME SOAP WATER FOR LUBRICANT .

EXPLODED VIEW



PEC332020030225GB

PARTS LIST

KEY.	Q'TY	DESCRIPTION
01.	1	MAIN FRAME
02.	1	STABILIZER
2a.	1	FRONT REAR STABILIZER
03.	1	SEAT POST
04.	1	HANDLEBAR POST
05.	1	HANDLEBAR
06.	1	CRANK ASSEMBLY
07.	1	CYCLEMONITOR
08.	1	TENSION CONTROL
09.	1	TENSION CABLE
10.	1	WIRE (A)
11.	1	WIRE (B)
12.	1	SADDLE
13.	1	SEAT POST BOOT
14.	1	30*60 SLEEVE
15.	2	HANDLEBAR END CAP
16.	2	FOAM GRIP
17.	1	PEDAL (R)
18.	1	PEDAL (L)
19.	1	CHAIN COVER (R)
20.	1	CHAIN COVER (L)
21.	1	CHAIN COVER (F)
22.	2	CRANK HOLE COVER
23.	2	WHEEL
24.	2	FOOT CAP
25.	1	T-KNOB
26.	1	KNOB
27.	4	M8 SOCKET BOLT x 70mm
28.	4	M8 SOCKET BOLT x 15mm
29.	1	M5 SCREW x 25mm
30.	2	M5 SCREW x 15mm
31.	8	M8 WASHER
32.	1	M8 SMALL WASHER
33.	3	M8 SPRING WASHER
34.	3	M8 NYLON NUT
35.	4	M5 SCREW x 10mm